

SECTIONS 4, 5, 6, 7, 8, & 9 T.6N., R.1E., S.L.B. & M.

IN WEBER COUNTY
SCALE 1" = 1200'

TAXING UNIT: 28

SEE BOOK 22 PAGE 28

SEE BOOK 22 PAGE 29

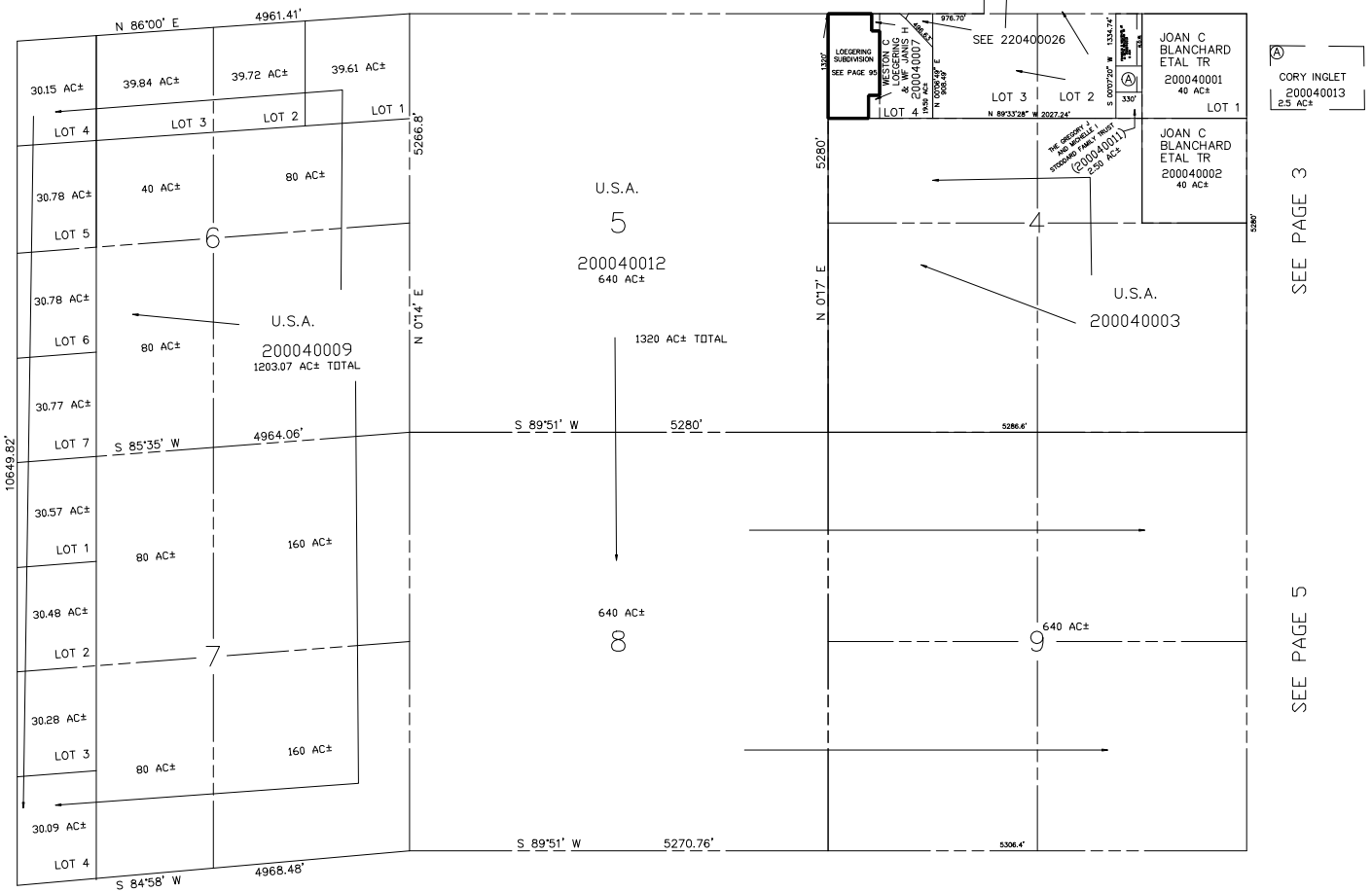
SEE BOOK 22 PAGE 40

SEE BOOK 11 PAGE 1

SEE BOOK 11 PAGE 86

SEE PAGE 3

SEE PAGE 5



SEE PAGE 23

SEE PAGE 20

SEE PAGE 17